



Berkshire Brushes Decorative Artists

January 2024

President's Message

Inside Happenings

January 27 2024

Saturday - January 27, 2024
9:00 am - 2:00 pm
Where - St Luke's Episcopal
Church
Lanesboro, MA & ZOOM

Inside

Presidents Message	pg. 1
Birthdays & Announcements	pg. 2
BB Tentative Class Schedule	pg. 3
New Members/Community & Happenings	pg. 4
Membership Form	pg. 5
January Project	pg. 06-09
Recipe Corner	pg. 10
Reminders	pg. 11
Executive Board & Committee Chairpersons	pg. 12

Deadline for the February 2024

Newsletter is:

January 31, 2024

Last Wednesday of the month



Happy New Year to All,

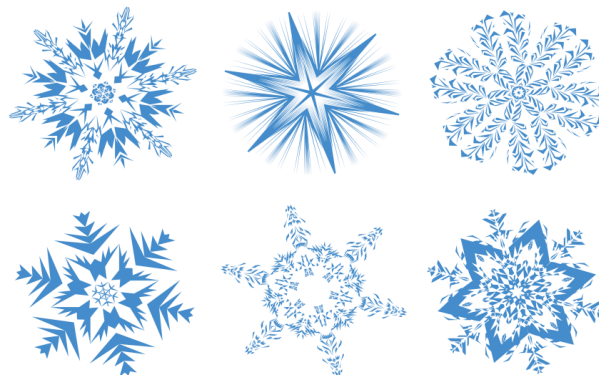
Now that the 2023 holidays are behind us we can move on to 2024! This year promises to be filled with fun teachers and classes and we are very excited to get it started. We hope you will make time to join us on the 4th Saturday of each month for a day of friendship and fun painting. Remember if you can't join us in person we do all of our classes by Zoom and they are recorded (unless the equipment doesn't co-operate)!

Our Facebook page is up and running and it will have all of our current information on it. There is a 2024 Tentative Schedule posted so mark your calendars. Remember during the winter months to check there for any class changes before you venture out to the church for in person meetings.

Our 2024 contract for NET has been sent in and we are very excited about some of the plans that are underway. Sylvia Ulion has graciously agreed to be a part of the Class Selection process for us for 2024. We are hoping to have some great classes this coming year. More will be announced as more planning takes place.

If anyone has any ideas for classes or teachers, Community Service or any other ideas that you think we might like please let us know!

Please join us in making Berkshire Brushes Decorative Artists a fun place to paint and share ideas with friends!



*Happy Painting,
Dorey*

Visit us on Facebook: <https://www.facebook.com/groups/746920876330590> for all happenings.

January Birthdays

Rosemary Burnham	15
Debbie Chase	23



*Birth Month
Flower*



January

Membership Renewal

If you have not already done so, please renew your membership soon. Renewal form for 2024 is on page 4. Dues are \$20.00. We would like all dues for 2024 paid no later than January 31, 2024. Members who have not renewed their membership by the end of January will not receive their newsletter or other communications from the Chapter after January 31, 2024.

Community Service Projects— Do you have an idea for a Community Service Project?

Let us know! We would like to have one project each year.

Would you like to Chair the Community Service Project Committee?

Let us know! You will not have to do it alone, we will all help out!

Inclement Weather—If Mother Nature decides to bless us with bad weather we will email you and call you by phone. Please be sure we have your updated information at all times.



Berkshire Brushes Decorative Artists
Lanesboro, MA



2024 Berkshire Brushes Decorative Artists Tentative Monthly Meeting Schedule:

All meetings in 2024 will be held in person at the St. Luke's Episcopal Church at 20 S. Main Street, Lanesboro, MA. Most meetings will have the teacher teaching via ZOOM for us, but we will still be getting together in person also. They will be in person and **also** via ZOOM on **the 4th Saturday of each month**, unless otherwise announced.

2024 Tentative Monthly Schedule

January – Shannon Miller – Acrylic –

February – Linda O'Connell – Acrylic

March – Seminar – Judy Ribitch – Acrylic

April – TBA

May – TBA

June Seminar – Lynn Andrews - Acrylic

July – Dorey Joy – Acrylic – teacher in person and ZOOM

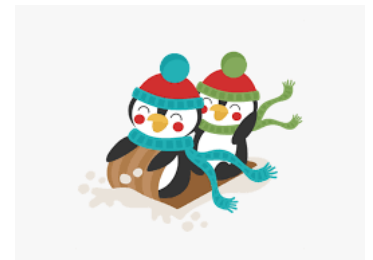
August - TBA

September Seminar – Marika Moretti – Acrylic

October – Donna Scully – Acrylic

November – Dorey Joy – Colored Pencil – Teacher in person and ZOOM

December 14, 2024 – Holiday Party with a yummy luncheon – Painting in the morning - Ornament Exchange – Grab Bag Exchange



Please note when bringing food to our meetings that we have a couple members with food allergies. Please make sure you put a note on your dish or refrain from using

COCONUT and FRESH SLICED TOMATOES.

A reminder that we would like the members to bring non perishable food items to the church when we have class as part of our community projects. Don't forget the flip tops from your soda cans, we give them to Deb Chase, her son is a Shriner. The current project is helping Ronald MacDonald Houses.

Thanks,
Gloria

New Member—Welcome!!

Welcome all new members



Returning Members

No returning members at this time.
Encourage old friends to rejoin us!



Community Happenings

If you know of something that is happening in our community or with a sister chapter, please let us know so we can post it here for all to see.

If you have not already renewed your 2024 Membership please do so as soon as possible. 2024 Membership form is on page 5.



2024 BERKSHIRE BRUSHES Membership Form

The membership for the remainder of the 2024 year is \$20.00. All meeting paintings will be in person and ZOOM!
<https://www.facebook.com/groups/746920876330590>

This application must accompany all checks.

Name _____ Birthday (Mo/Day) _____

Phone: Home () _____ Cell () _____

Preferred first name for nametag _____ Referred by _____

Address _____

City _____ State _____ Zip _____

E-Mail _____

Check here if new Address Phone Name (previous) _____

Check applicable: New Member Renewal

Teacher designation in Directory

Shop/Studio Owner - Fill in below if you wish to list your shop/studio in the Directory:

Shop/Studio Name _____ Phone () _____

Address _____ City _____ State _____ Zip _____

Please check all that apply:

I may be contacted for rides. I would like to be a "buddy" to a new member.

I would be willing to teach or demonstrate at a meeting or other event.

I am interested in serving on the board as _____

I am interested in serving on the following committee(s) _____

I am able to offer my skills in the following area(s) _____

I own or have access to a computer. Mac Windows

My occupation _____

I also belong to the following chapter(s) _____

Comments _____

Please send check for \$20.00 (Berkshire Brushes dues only), payable to Berkshire Brushes and this application to:

Sylvia Ulion
 3 Ponderosa Drive
 Voorheesville, NY 12186

8/2023

Purple Pizzaz

**Shannon Miller
Certified Decorative Artist**



**www.ShannonMillerPaints.com
shannon@shannonmillerpaints.com
Shannon Miller CDA**

SURFACE. Enlarge or shrink the pattern to the surface of your choice.

PALETTE

DECOART AMERICANA ACRYLICS

Titanium White

Perfect Peri

Wisteria

Black Plum

Aloe

Thicket

Hauser Dark Green

Cranberry Wine

Cool White

Foliage Green

BRUSHES

SCHARFF

Series 142 nos. #20 Flat

Series 458 nos. #1 & #2 liners

Series 482 nos. #6/0 Scroller

Series 130 nos. #12 Shader

Series 432 nos. #4, 6, 8 Filberts

Bobbie Campbell's 3 blender set, www.bobbiecampbell.com

Bringle Round Blender, series 1450 no. #10

SUPPLIES

Basic painting supplies

DEFT Clear Wood Finish, Satin

1 inch sponge brush

1 inch blue painters tape

Measuring tape

SOURCES

- The brushes are available from WWW.ARTBRUSH.COM
- Bobbie Campbell's 3 blender set, www.bobbiecampbell.com

Tips and Hints

Preparing your surface. Proper preparation of your surface will lead to a good finished piece and give you a good foundation for the rest of the painting. If your surface is wood or MDF, first sand it then mix brush on sealer 1:1 with the base coat color. This will save you a coat of paint. Sand with a fine sand paper, sanding film, or sanding block. Then apply 2 more base coats. If your surface is unprimed metal, then prime the piece with a spray metal primer and let dry before applying your base coat; it is not necessary to use sealer on metal.

Base Coating your surface. Use a filbert or cat's tongue brush for most base coating to avoid ridges in your piece. Flat and angle brushes achieve a precise edge for objects such as holly leaves or base coating the outer edge of an object with corners; use the filbert to paint the inside area after you have defined the edges.

Floating color. Always use a clean water basin to wet your brush before loading color; have a separate water basin for rinsing out your brushes. This way, you will not have "dirty paint water" in your brush that you are floating with that can potentially dull the paint color. Wet your flat (or angle brush if you prefer) brush then gently press each side onto a dry paper towel. Viva or Blue Shop paper towels work the best. Load the color onto the corner of your brush by dipping into a fresh puddle of paint so that the paint evenly covers the corner on both sides. Then going to either your wax or wet palette, work the brush in the same place back and forth to distribute the color across the brush,

achieving the width of the float you like and the color has a gradual fade in intensity or softness. You want to place enough pressure on the brush head so that the entire brush surface is being used.

Mopping. Mopping is done to soften a float or edge of a float. Hold the mop brush perpendicular to the surface and lightly pounce up and down on the lips of the brush moving from the darkest area to the lightest area. Let the area dry. This is a great way to build gradual soft floats, especially when using multiple colors to float in the same area. If you clean your mops with an alcohol based sanitizer as you paint, you need to clean them with a brush soap after you are finished painting for the day as the alcohol dries out the brush hairs.

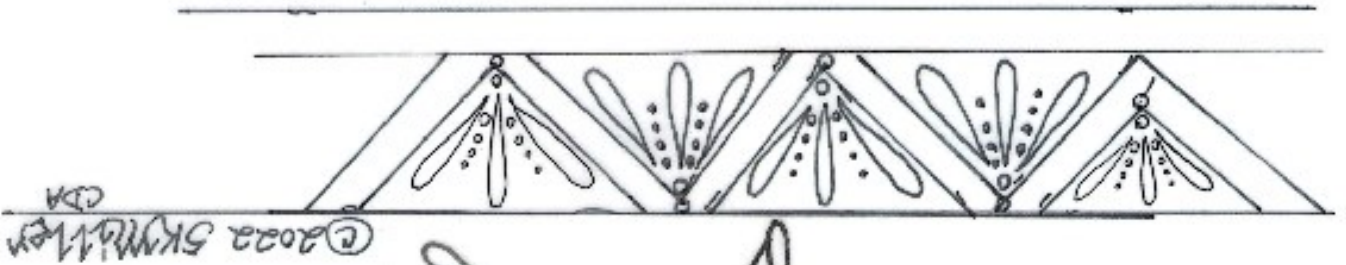
Line work. Using the liner, thin your paint with clean water to a slightly thinner than nail polish consistency or the consistency of a thicker ink. If the line begins with a sharp point, gently tap the tip on the palette in a clean spot in case there is a "blob" on the brush tip. Important when you are pulling lines, is to use your pinky finger as an anchor on your painting table or the surface you are painting. To pull lines with loops or a vine look, try holding your liner brush straight up perpendicular to your surface so that the thinned paint will travel down evenly on your brush to the surface to avoid "globs". For shorter lines such as veins on a leaf, use the heel of your hand as the anchor to pull consistent lines.

S-Stroke. Some painters are more comfortable pulling these strokes with a flat brush as they like the defined chisel edge. You can also use a liner brush that when loaded with paint can be pressed down on the surface into a flat brush at the fastest part of the stroke. Start up on the chisel edge and pull to form the skinny end of the stroke and as you curve into the S, apply more pressure to form the wide part of the stroke and then pull up to the chisel on the end of the stroke.

Comma strokes. Use fresh paint always. Dampen your brush and blot out on paper towel. Load your brush by pulling paint straight out from the puddle to form a "loading zone". As you pick up your brush, turn it slightly while it's in the air and then reach back into the puddle of paint and pull the brush out into the loading zone again. Repeat this action until the brush is loaded evenly. Be patient! Place the tip of the brush where the stroke begins and press to make a nice rounded head before you start to pull the stroke. Look where you want to finish the stroke like looking ahead driving a car.

Varnishing. For flat finished projects, I prefer a brush on varnish applied with an old dense mop brush or a microfiber car wax applicator pad (you can purchase these in the auto care area in a Walmart or other store. I save styrofoam trays from grocery store items as they have a lip on them and pour the varnish out on these. Any other projects, I spray varnish.

BEFORE THE ZOOM CLASS. Sand and seal your wood with 1:1 mix of sealer and **Lamp Black**. Sand lightly and then base coat with another coat of **Lamp Black**. Let this dry and then apply pattern lines for leaves, stems, flowers and comma strokes, and the crosshatching; do not transfer the strokes on the actual flowers and leaves. Base coat the leaves with **Thicket** and the flower petals with **Wisteria**; I use a #8 filbert.



Recipe Corner

If you are anything like me and do not like cabbage – you really do need to try this soup! It tastes sooooo good and it is good for you too whether you are dieting or not!

Cabbage Fat-Burning Soup

Recipe from Nell Marsh

Ingredients

- 10 stalks celery, chopped
- 5 carrots, chopped
- 3 onions, chopped
- 2 green bell peppers, diced
- 1 large head cabbage, chopped
- 1 (15 ounce) can cut green beans, drained
- 2 quarts tomato juice
- 2 (16 ounce) cans whole peeled tomatoes, with liquid
- 1 (14 ounce) can beef broth
- cold water, to cover
- 1 (1 ounce) envelope dry onion soup mix

Directions

1. Place celery, carrots, onions, cabbage, bell peppers, and green beans in a large soup pot.
2. Add tomato juice, tomatoes, beef broth, and enough water to cover vegetables; add onion soup mix and stir to combine. Bring to a boil over medium heat; reduce heat to low and simmer until vegetables are tender, about 25 minutes.

REMINDERS.....

Community Service – Even if you are ZOOM members you can contribute! Send a monetary donation made out to Berkshire Brushes and we will purchase the non-perishable items for you!

If in person please bring a few non-perishable items to the monthly meetings!



Recipe Corner – This is for you members! Please send us recipes you are willing to share. We will post them in the Recipe Corner of the newsletter. Dorey at djoy@nycap.rr.com



Areas of Interest – have something to share with our members – let us know! Have you found something new or even old you found exciting? SHARE IT with us! You can email it to me Dorey at djoy@nycap.rr.com

Berkshire Brushes Decorative Artists 2024

Executive Board & Committee Chairs

President:

Dorey Joy
5955 Depot Rd.
Altamont, Ny 12009
djoy@nycap.rr.com
518-861-5065



Vice President:

Gloria Greaves
31 Thomas Rd.
Pittsfield, MA 01201
ggreaves@nycap.rr.com
413-770-2416

Secretary:

Debbie Chase
PO Box 291
Lanesboro, MA 01237
miatams2@gmail.com
413-442-6729



Treasurer:

Pam Wall
72 McAllister St. Ext.
Pittsfield, MA 01201
pj.wall@nycap.rr.com
413-499-4121

Parliamentarian:

Janice Cormier
68 Littleville Rd.
Huntington, MA 01050
countryschoolhse@aol.com
413-667-0001



Committee Chairs:

Membership:

Sylvia Ulion
3 Ponderosa Dr.
Voorheesville, NY 12186
sulion4@nycap.rr.com
518-755-4438

Newsletter Editor:

Doris Santore
11 Alfred Dr. E.
Albany, NY 12205
santore_2@msn.com
518-542-0646